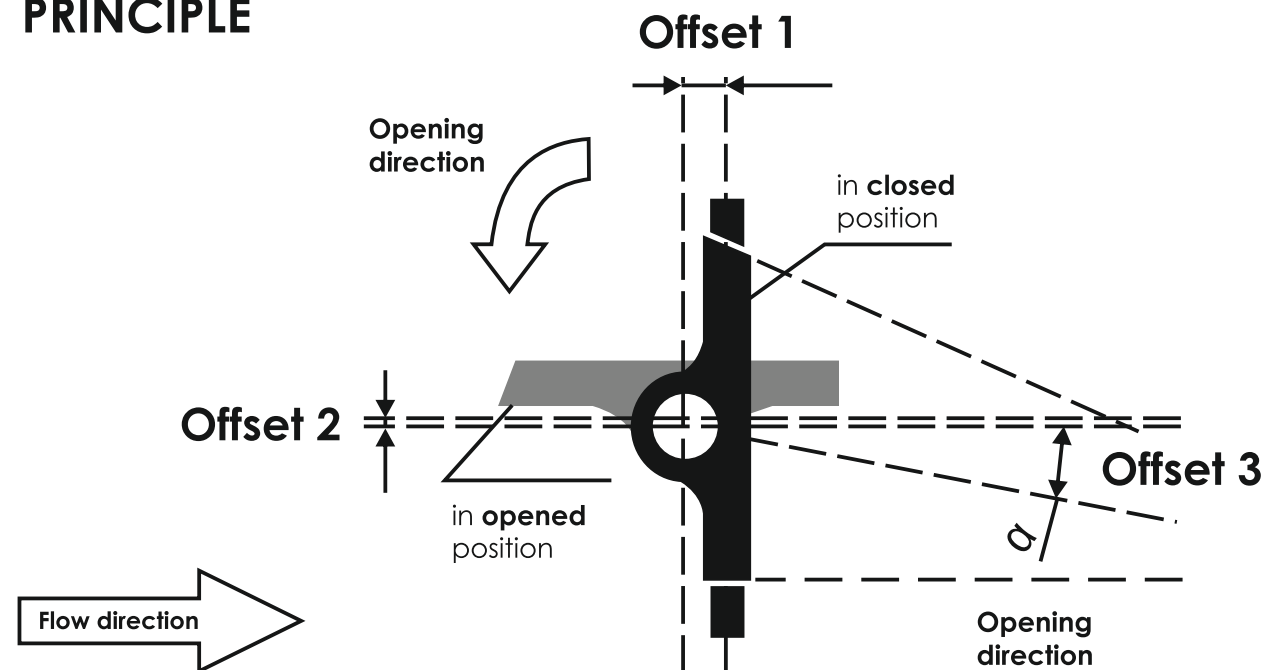


Lifetime and warranty

Service life of LD butterfly valve is more than 15 years and can change depending on operating conditions. Manufacturer's warranty – 36 months from start up date but not more than 42 months from the date of purchase provided that all storage, installation and operating requirements are met.

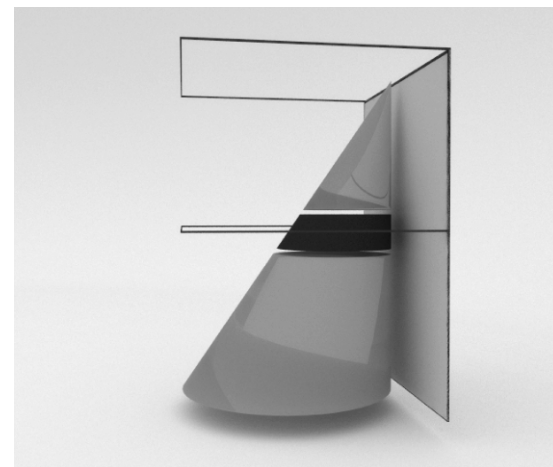
TRIPLE OFFSET PRINCIPLE



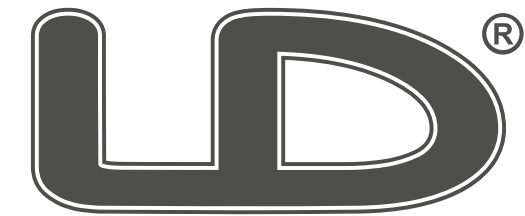
Triple offset principle provides "A" rate tightness at a minimal torque.

Friction-free metal-to-metal sealing with triple offset construction of butterfly valves provides effective disc opening at maximum pressure drops. At the same time triple offset construction prevent wedging of the disc. Low torque enables choosing of smaller manual gears as well as smaller (and consequently inexpensive) electric, pneumatic or hydraulic actuators.

- **Offset 1** displaces shaft axis relative to sealing surface
- **Offset 2** displaces shaft axis relative to pipeline axis
- **Offset 3** – cone sealing surface relative to cone axis measured by "a" angle



Offset 3



STEEL VALVES

TRIPLE OFFSET BUTTERFLY VALVE

Metal seated



www.chsgs.ru



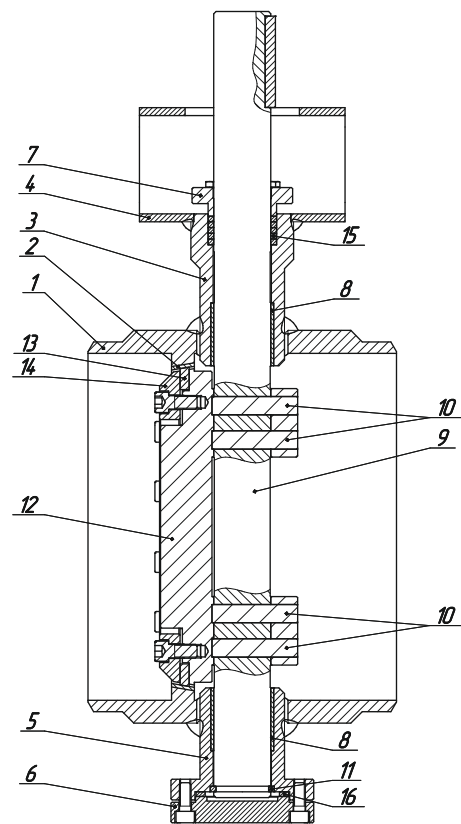
STEEL VALVES

LD GROUP

Yeniseyskaya str. 47, 454010, Chelyabinsk, Russia
Phone: +7 (351) 730 4747, Fax: +7 (351) 796 3085
e-mail: office@chsgs.ru

www.chsgs.ru

LD BUTTERFLY VALVE CONSTRUCTION



MATERIAL OF MAIN PARTS		
No.	Part	Material
1	Body	Steel 20 (1.1151)
2	Facing	AISI 304
3	Stem shell	Steel 20 (1.1151)
4	Top flange	Steel 20 (1.1151)
5	Trunnion	Steel 20 (1.1151)
6	Plug	Steel 20 (1.1151)
7	Neck bush	Steel 20 (1.1151)
8	Washer	Tin-free cast bronze
9	Shaft	AISI 420
10	Pin	AISI 420
11	Retaining ring	AISI 420
12	Disc	AISI 304
13	Disc seal	AISI 304+TEG
14	Retaining ring	AISI 304
15	Stem sealing	TEG
16	Gasket	AISI 304+TEG

Application

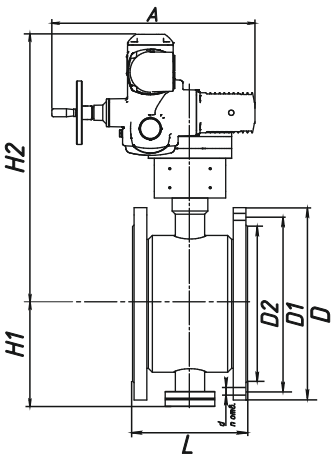
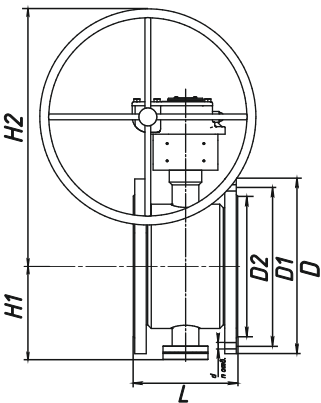
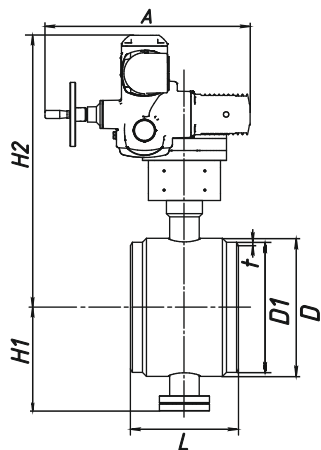
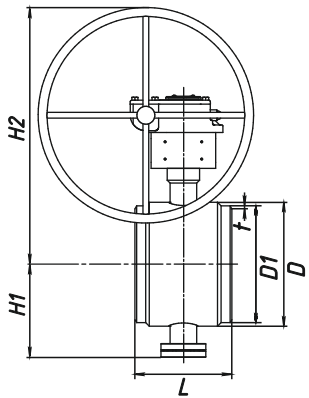
LD butterfly valves are designed for application in district heating systems, can be used in critical industrial pipelines, including petrochemical and oil-processing industry. Valves are used for control and shut-off purposes and provide “A” rate tightness in both directions of flow.

Identification

BV.	X.	X.	XXX.	XX.	XX.
Connection to pipeline:					
Flange/flange	F				
Welding/welding	W				
Operation:					
Manual gear	G				
Electric actuator	A				
Nominal diameter					
DN					
Pressure class					
PN					
Steel grade					

Main characteristics of LD triple offset butterfly valve

- ✓ Body: carbon steel
- ✓ Facing: stainless steel AISI 304
- ✓ Disc material: stainless steel AISI 304
- ✓ Disc sealing: stainless steel AISI 304+TEG
- ✓ Nominal pressure: PN 1,6 and 2,5 MPa
- ✓ Nominal diameter: DN 300-DN 1200
- ✓ Connection: welding/welding, flange/flange
- ✓ Designed for tightness rate “A”



TECHNICAL DATA
WELDING/WELDING WITH MANUAL GEAR

Identification	Dn	D	D1	t	L	H1	H2	Top flange	Gearbox	Weight, kg
BV.W.G.300.025.02	300	345	325	10	270	240	743	F16	Q-4000	85
BV.W.G.350.025.02	350	395	377	10	290	270	768	F16	Q-4000	119
BV.W.G.400.025.02	400	446	426	10	310	305	823	F16	Q-6500S	131
BV.W.G.500.025.02	500	550	530	10	350	410	895	F25	Q-12000S	149
BV.W.G.600.025.02	600	650	630	10	390	475	975	F25	Q-16000S	350
BV.W.G.700.025.02	700	740	720	10	430	540	1259	F30	Q-24000S	622
BV.W.G.800.025.02	800	840	820	12	470	610	1329	F35	Q-32000S	907
BV.W.G.900.025.02	900	940	920	12	510	685	1483	F35	Q-50000S	1336
BV.W.G.1000.025.02	1000	1040	1020	12	550	750	1543	F35	Q-50000S	1572
BV.W.G.1200.025.02	1200	1240	1220	12	630	825	1693	F40	Q-70000S	2130

TECHNICAL DATA
WELDING/WELDING WITH ACTUATOR

Identification	Dn	D	D1	t	L	H1	H2	A	Top flange	Actuator (AUMA)	Weight, kg
BV.W.A.300.025.02	300	345	325	10	270	240	683	514	F16	SA07.6/GS100.3/VZ4.3 (SQ14/2)	95
BV.W.A.350.025.02	350	395	377	10	290	270	708	514	F16	SA07.6/GS100.3/VZ4.3	110
BV.W.A.400.025.02	400	446	426	10	310	305	763	514	F16	SA10.2/GS125.3/VZ4.3	157
BV.W.A.500.025.02	500	550	530	10	350	410	838	537	F25	SA10.2/GS125.3/VZ4.3	237
BV.W.A.600.025.02	600	650	630	10	390	475	913	537	F25	SA10.2/GS160.3/GZ160.3	392
BV.W.A.700.025.02	700	740	720	10	430	540	1058	537	F30	SA10.2/GS200.3/GZ200.3	637
BV.W.A.800.025.02	800	840	820	12	470	610	1128	537	F35	SA10.2/GS200.3/GZ200.3	866
BV.W.A.900.025.02	900	940	920	12	510	685	1291	725	F35	SA14.2/GS250.3/GZ250.3	1280
BV.W.A.1000.025.02	1000	1040	1020	12	550	750	1351	725	F35	SA14.2/GS250.3/GZ250.3	1490
BV.W.A.1200.025.02	1200	1240	1220	12	630	825	1518	725	F40	SA14.2/GS315/GZ30.1	On request

TECHNICAL DATA
FLANGE/FLANGE WITH MANUAL GEAR

Identification	Dn	D	D1	D2	d	n	L	H1	H2	Top flange	Gear	Weight, kg
BV.F.G.300.025.02	300	485	430	390	30	16	290	240	530	F16	Q-4000S	112
BV.F.G.350.025.02	350	550	490	450	33	16	310	270	580	F16	Q-4000S	147
BV.F.G.400.025.02	400	610	550	505	33	16	340	305	645	F16	Q-6500S	193
BV.F.G.500.025.02	500	730	660	615	36	20	380	410	790	F25	Q-12000S	295
BV.F.G.600.025.02	600	840	770	720	39	20	420	475	895	F25	Q-16000S	371
BV.F.G.700.025.02	700	960	875	820	42	24	460	540	1000	F30	Q-24000S	663
BV.F.G.800.025.02	800	1075	990	930	45	24	500	610	1110	F35	Q-32000S	975
BV.F.G.900.025.02	900	1185	1090	1030	48	28	540	685	1225	F35	Q-50000S	1330
BV.F.G.1000.025.02	1000	1315	1210	1140	56	28	590	750	1340	F35	Q-50000S	1560
BV.F.G.1200.025.02	1200	1525	1420	1350	56	32	660	825	1485	F40	Q-70000S	2110

TECHNICAL DATA
FLANGE/FLANGE WITH ACTUATOR

Identification	Dn	D	D1	D2	d	n	L	H1	H2	A	Top flange	Actuator	Weight, kg
BV.F.A.300.025.02	300	485	430	390	30	16	290	240	530	1060	F16	SA07.6/GS100.3/VZ4.3 (SQ14/2)	115
BV.F.A.350.025.02	350	550	490	450	33	16	310	270	580	1160	F16	SA07.6/GS100.3/VZ4.3	182
BV.F.A.400.025.02	400	610	550	505	33	16	340	305	645	1290	F16	SA10.2/GS125.3/VZ4.3	192
BV.F.A.500.025.02	500	730	660	615	36	20	380	410	790	1580	F25	SA10.2/GS125.3/VZ4.3	250
BV.F.A.600.025.02	600	840	770	720	39	20	420	475	895	1790	F25	SA10.2/GS160.3/GZ160.3	410
BV.F.A.700.025.02	700	960	875	820	42	24	460	540	1000	2000	F30	SA10.2/GS200.3/GZ200.3	693
BV.F.A.800.025.02	800	1075	990	930	45	24	500	610	1110	2220	F35	SA10.2/GS200.3/GZ200.3	970
BV.F.A.900.025.02	900	1185	1090	1030	48	28	540	685	1225	2450	F35	SA14.2/GS250.3/GZ250.3	1390
BV.F.A.1000.025.02	1000	1315	1210	1140	56	28	590	750	1340	2680	F35	SA14.2/GS250.3/GZ250.3	1590
BV.F.A.1200.025.02	1200	1525	1420	1350	56	32	660	825	1485	2970	F40	SA14.2/GS315/GZ30.1	2236